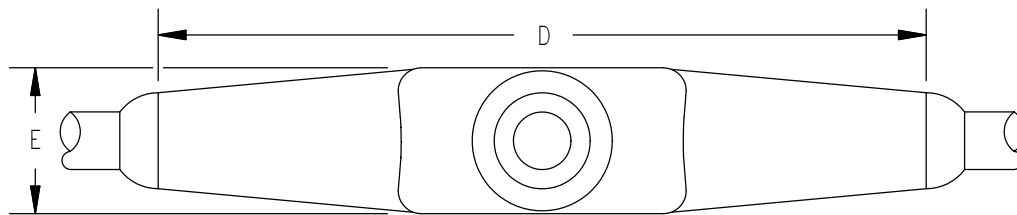
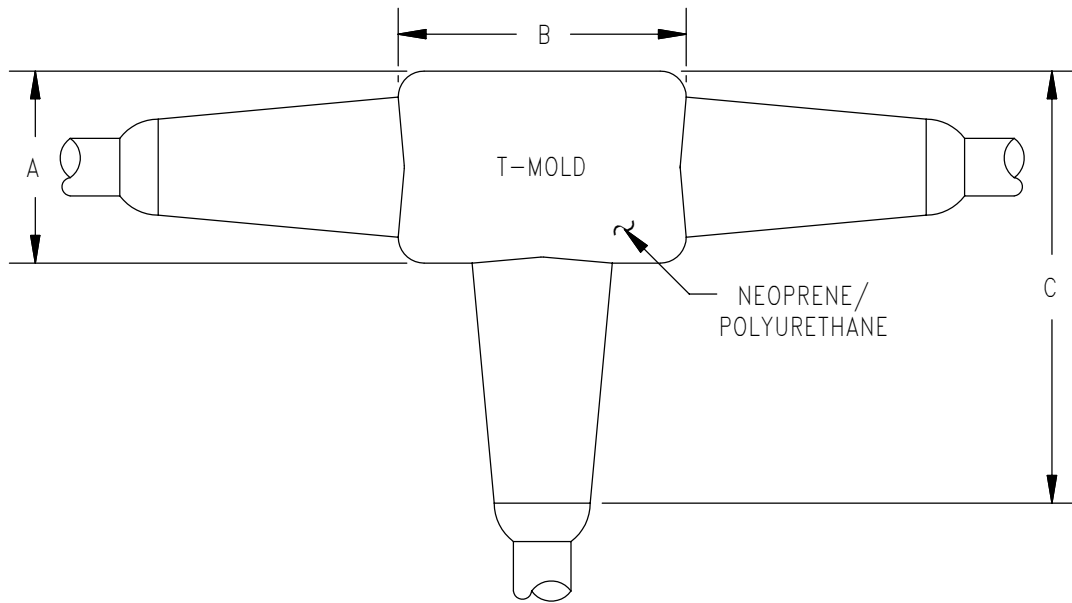


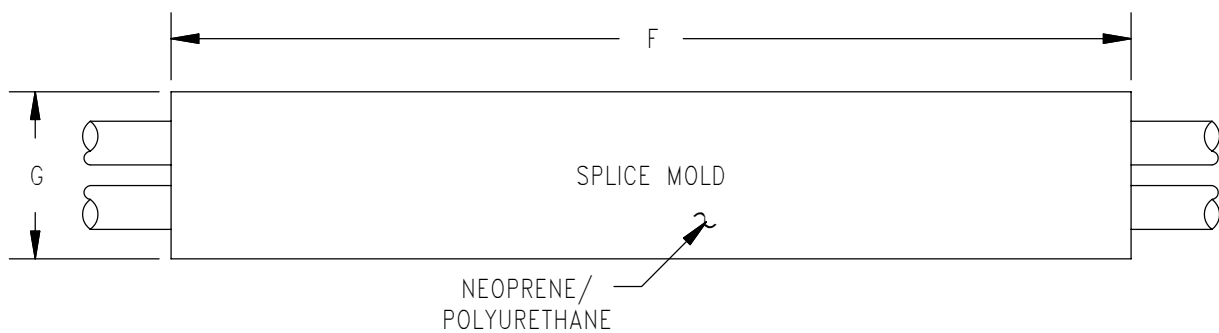
BREAKOUTS

DESCRIPTION AND MATERIAL	Molded neoprene or polyurethane Cable jacket and conductor insulation determines overmold material. Number of conductors and cable diameter determines size of mold. Custom molds to customer specifications available upon request, contact factory.
USES	Splicing cable. Breakout to several cables. Connect multiple devices to one main line. Economic pressure proof junction box.
GUIDELINES	Elastomers can be seriously degraded if exposed to direct sunlight or high ozone levels for extended periods of time.

BREAKOUTS

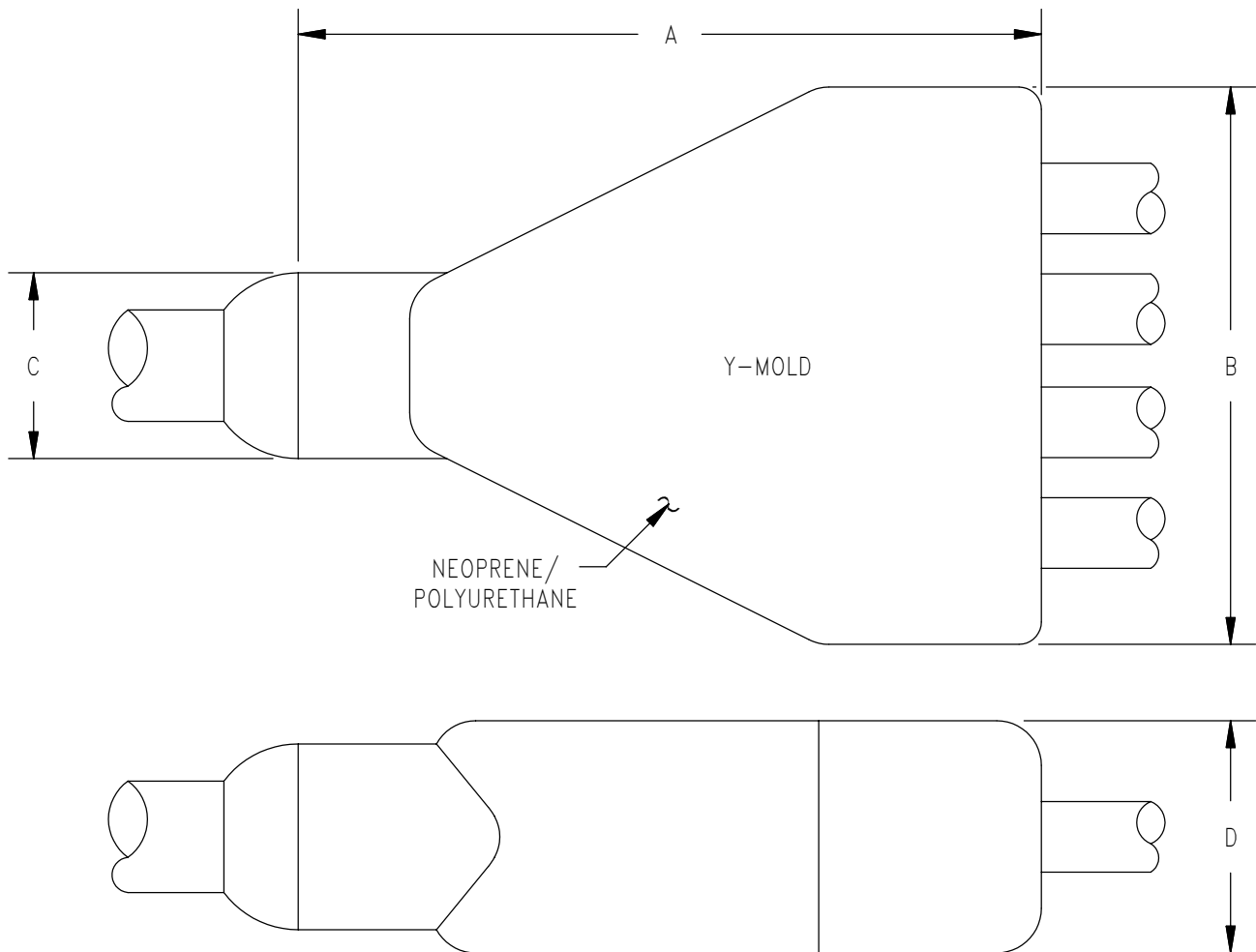


T-MOLDS					
SIZE	A	B	C	D	E
T-15	1.00	1.50	2.25	4.00	.75
T-20	1.50	2.00	3.25	5.45	1.36



SPLICE MOLDS		
SIZE	F	G
SP-20	2.00	Ø .87
SP-30	3.00	Ø 1.50
SP-40	4.00	Ø .87
SP-46	4.60	Ø 1.14

SPLICE MOLDS		
SIZE	F	G
SP-50	5.00	Ø .87
SP-50L	5.00	Ø 1.40
SP-60	6.00	Ø 2.00



Y-MOLDS				
SIZE	A	B	C	D
Y-20	3.00	2.00	.75	.75
Y-30	4.00	2.80	1.00	1.25
Y-35	4.34	3.50	1.00	1.50
Y-45	5.50	4.40	1.25	1.75
Y-60	6.60	6.00	1.50	2.00

THIS PAGE INTENTIONALLY LEFT BLANK